

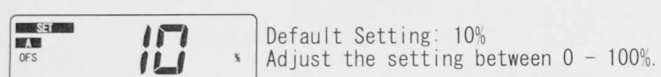
EVC-S Quick Manual

Turn on the EVC-S.
 To turn on (or off) the EVC-S, press the center of the switch longer than a second.



★ To achieve the target boost setting.
 Press the left side of the switch longer than a second to go to the Boost Control Mode.

Off Set Value ("OFS" appears on the monitor.)
 Entering a larger number increases the boost pressure.



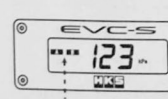
- Press the upper side of the switch to increase the number and increase the boost pressure.
- Press the lower side of the switch to decrease the number and decrease the boost pressure.

Once the target boost setting is entered, press the left side of the switch longer than a second.

Adjust the number (%) until the target boost is achieved following the procedure above. For safety, start off with a small number.

※ Before setting the target boost pressure, select the A Mode or B Mode by pressing the right or left side of the switch.

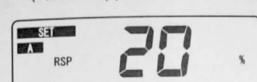
Boost Control Mode



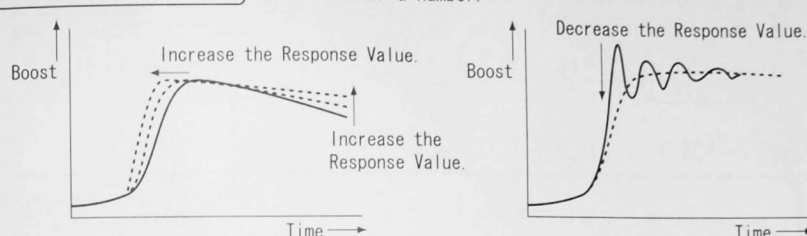
Selected mode "A" or "B" is shown.

- To switch the mode, press the right or left side of the switch.

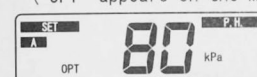
Press the right side of the switch to set the Response Value. ("RSP" appears on the monitor.)



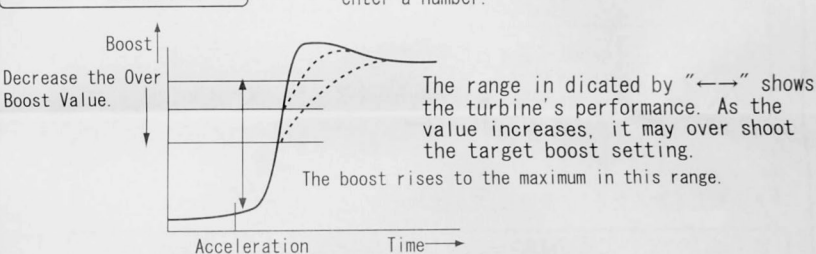
- Press the upper or lower side of the switch to enter a number.



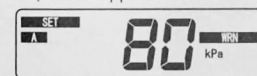
Press the right side of the switch to set the Over Boost Value. ("OPT" appears on the monitor.)



- Press the upper or lower side of the switch to enter a number.



Press the right side of the switch to set the Warning Value. ("WRN" appears on the monitor.)



- Press the upper or lower side of the switch to enter a number.

※ Enter a slightly larger number than the target boost value.

Press the right side of the switch to set the Drop Value. ("DRO" appears on the monitor.)



- Press the upper or lower side of the switch to enter a number.

Press the right side of the switch to return to the Offset Value.

Press the left side of the switch longer than a second to determine the setting. The boost pressure appears on the monitor.

Display

A Mode and B Mode allow for 2 different boost settings.

[OFS=Offset Value] Boost setting item of initial standard.

[RSP=Response Value] Response Value under the Boost Setting Mode

[OPT=Over Boost Value] Boost value the EVC starts controlling.

[DRO=Drop Boost Value] Value decreased from the offset value when boost exceeds the warning value.

Boost pressure or various setting value is digitally-displayed.



[PH=Peak Hold Display] This comes on when the peak hold boost value is displayed.

[WRN=Warning Display] This comes on when the warning function is activated.

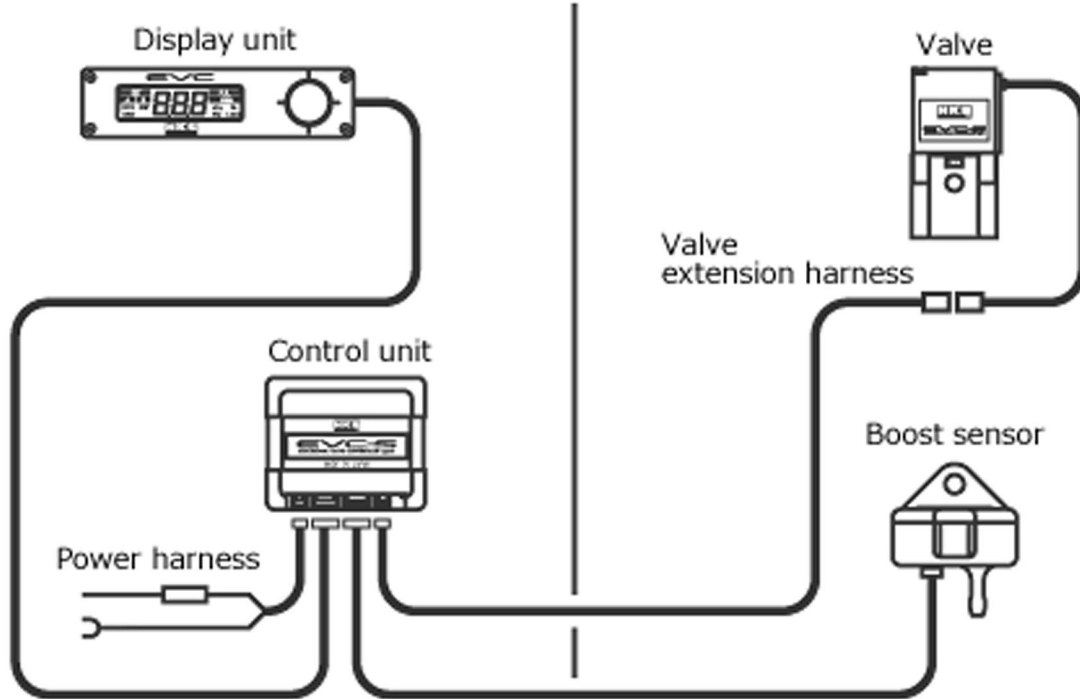
[kPa·PSI=Unit] Selectable unit from kPa (kilo pascal) or PSI (pound square inch).

[LOCK=Data Lock] Setting data can be locked.

%=This comes on during setting the Offset, etc.

EVC-S Installation Outline

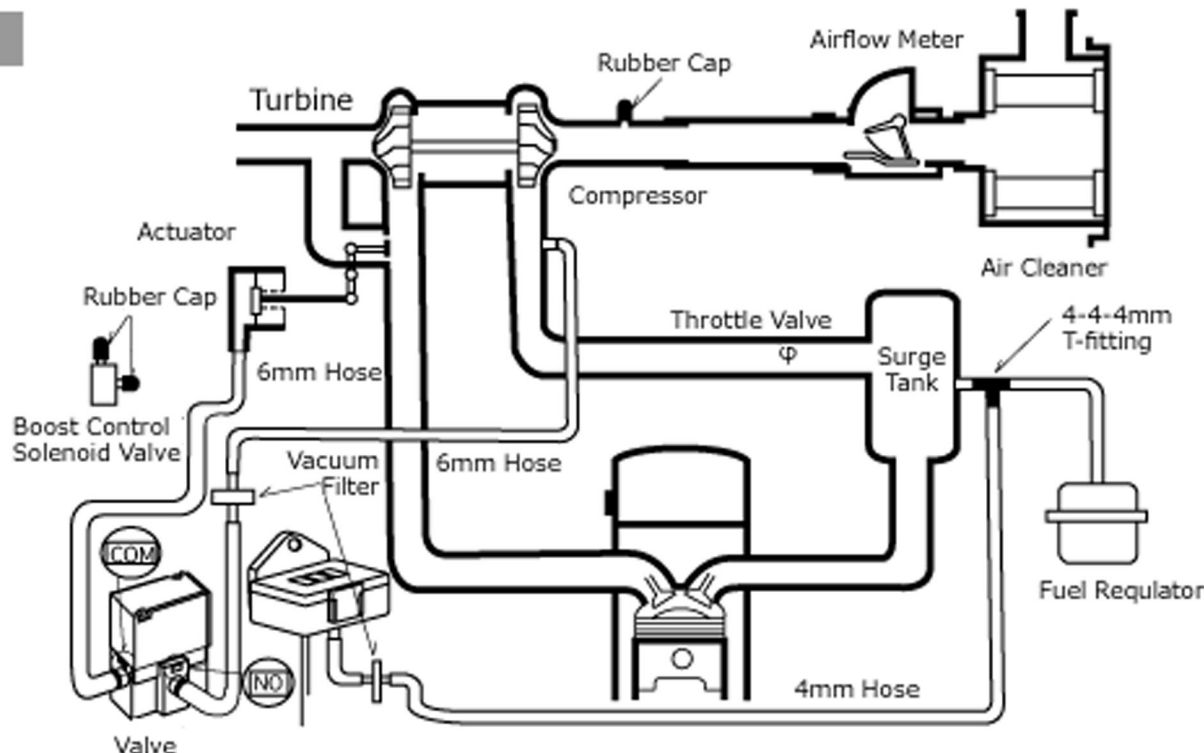
Cabin



Engine compartment

Piping Layout

Actuator Turbine



Wastegate Turbine

