

SOARER TT BLOW-OFF VALVE ADAPTOR INSTRUCTIONS

IMPORTANT NOTES ON FITTING YOUR BOV SOARER TWIN TURBO ADAPTOR

Turbosmart recommends that your Blow Off Valve (BOV) and Adaptor kit is fitted by an appropriately qualified technician.

ADAPTOR KIT CONTENTS

Please check that the following items have been supplied in your Soarer Twin Turbo Adaptor Kit.

Quantity	Description	Use
1	Soarer TT adaptor pipe	Joining pipe from the intercooler to the throttle body
2	90mm constant tension hose clamps	Secures the Soarer TT adaptor to the throttle body
2	70mm constant tension hose clamps	Secures the Soarer TT adaptor to the intercooler
1	70mm ID Silicon hose coupler	To connect the Soarer TT adaptor to the throttle body
1	63mm ID Silicon hose coupler	To connect the Soarer TT adaptor to the intercooler pipe
1	Pre-assembled Silicon hose assembly	Connects the intake manifold fitting to the Turbosmart BOV
1	5mm spring clamp	Secures the 5mm Silicon hose over the Turbosmart BOV
1	6mm spring clamp	Secures the 6mm hose onto the intake manifold fitting
1	Soarer BOV Blank	Designed specifically to blank off the factory BOV flange
1	29mm blanking plug	To seal off the factory return pipe
1	40mm constant tension hose clamp	To secure the 29mm blank on the return pipe

Note: The Soarer TT pipework adaptor kit readily accepts the following Turbosmart BOVs:

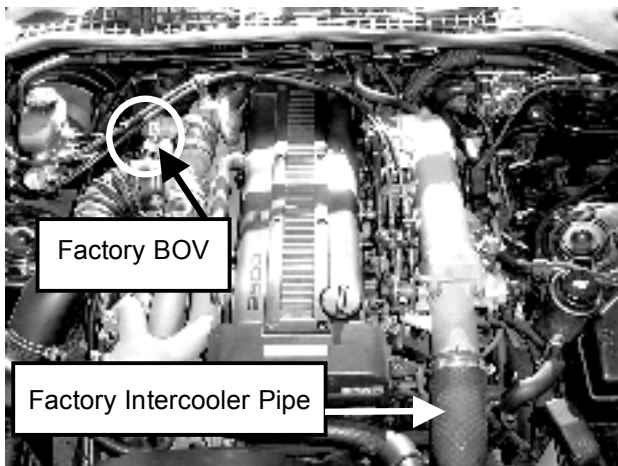
Blow Off Valve Name	Part No.
Blow-off Valve - Vee Port	FG-BOV-002VP
Blow-off Valve - Supersonic	FG-BOV-003SS
Blow-off Valve - Megasonic	FG-BOV-003MS

To install a Dual Port or Plumb Back BOV, fabrication will be required to connect the plumb-back fitting to the intake.

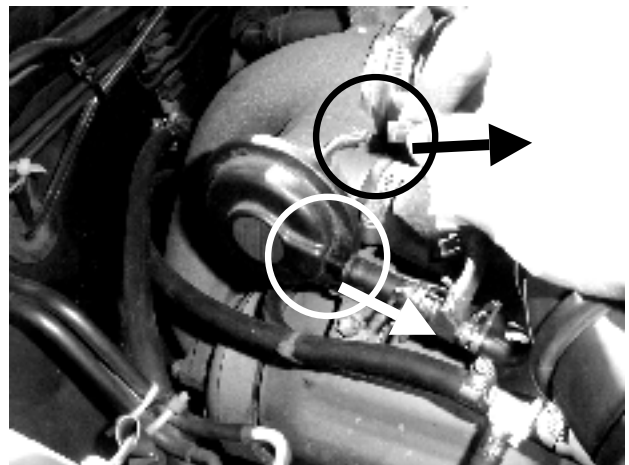
FITTING YOUR SOARER TWIN TURBO BOV ADAPTOR

Note: Please thoroughly read and understand both these instructions and the fitting instructions supplied with your BOV before commencing this installation.

Step 1. Locate the factory BOV and factory intercooler pipe.

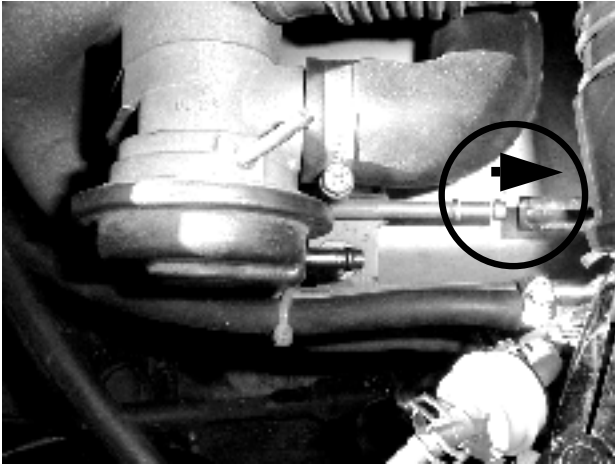


Step 2. Disconnect the two vacuum/boost lines on the factory BOV.

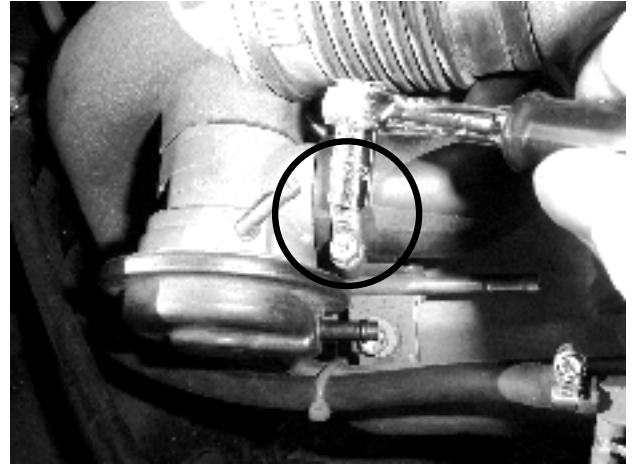


SOARER TT BLOW-OFF VALVE ADAPTOR INSTRUCTIONS

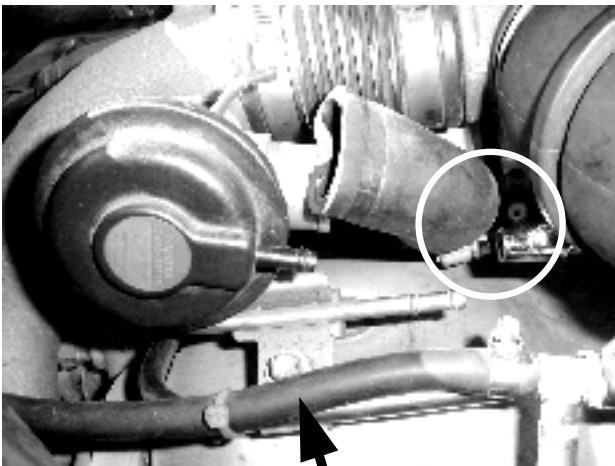
Step 3. Remove the factory vacuum/boost line by disconnecting it from the metal tube below the factory BOV.



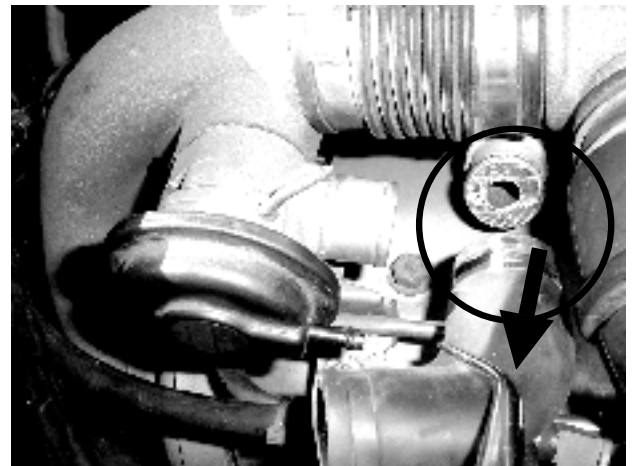
Step 4. Undo the hose clamp on the factory BOV return pipe using an 8mm socket. Then disconnect the return pipe from the BOV.



Step 5. Undo the hose clamp on the other end of the return hose using an 8mm socket.



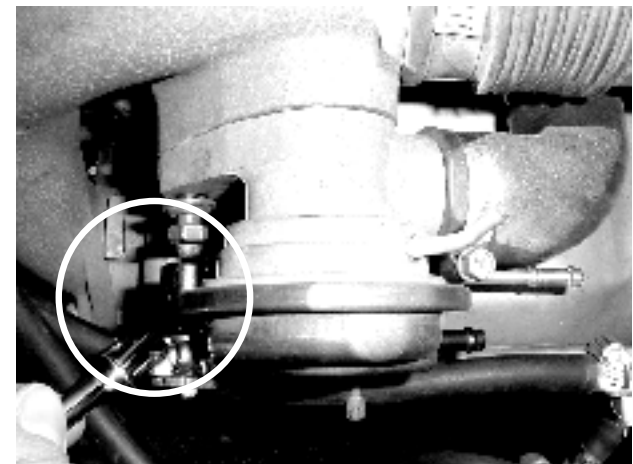
Step 6. Remove the return hose.



Step 7. Remove the bolt on the underside of the factory BOV with a 10mm socket.

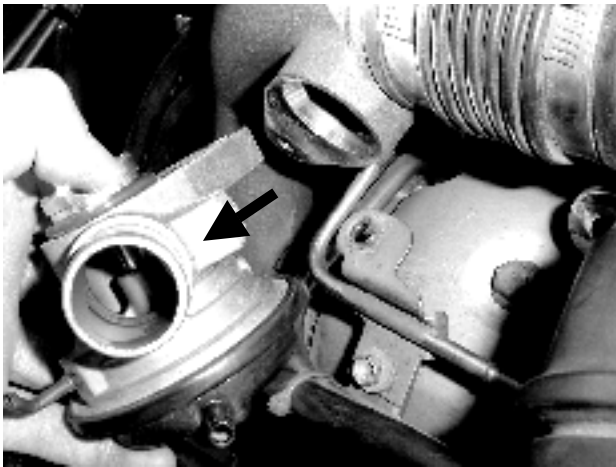


Step 8. Remove the bolt securing the factory BOV to the pipe flange with a 12mm socket.

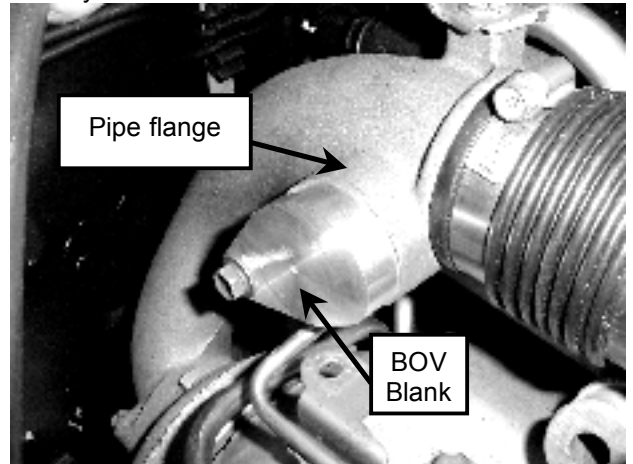


SOARER TT BLOW-OFF VALVE ADAPTOR INSTRUCTIONS

Step 9. Remove the factory BOV.



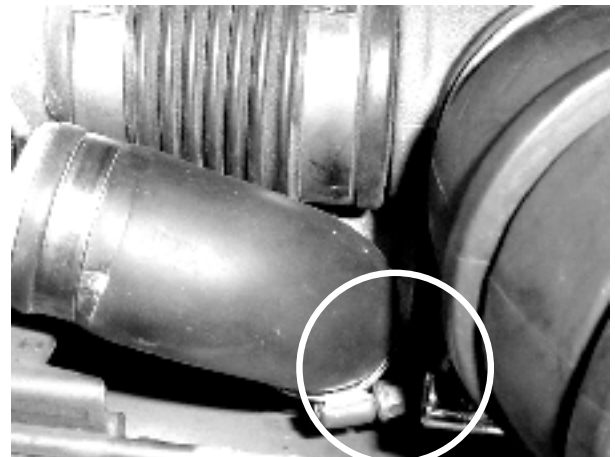
Step 10. Take the O ring from the factory BOV and fit it over the Soarer BOV blank supplied. Install the blank over the pipe flange and secure it with the original factory nut.



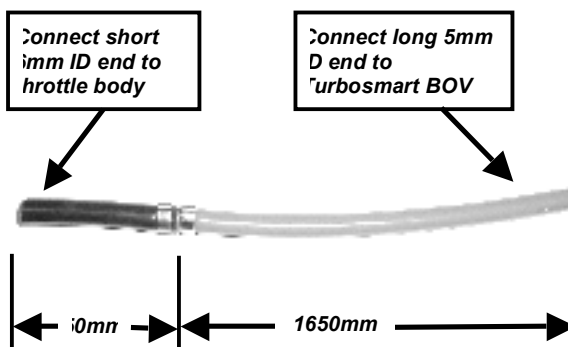
Step 11. Block off the factory return hose with the 29mm blanking plug supplied. Use the supplied 40mm hose clamp to secure the plug. Then tighten, using a 7mm socket.



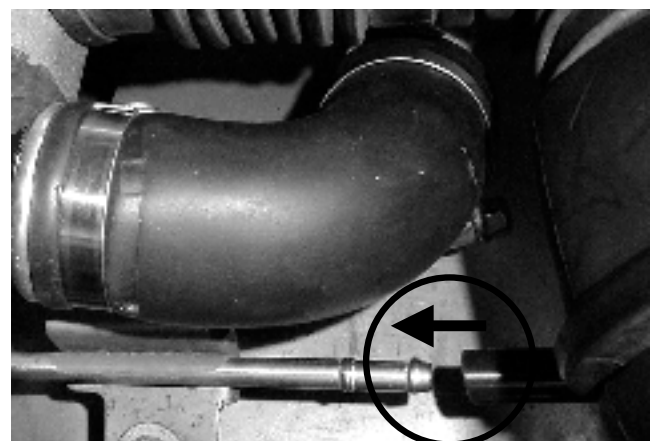
Step 12. Replace the factory return pipe on its original fitting and secure it with a 40mm hose clamp supplied. Tighten the clamp with a 7mm socket.



Step 13. Connect the pre-assembled silicon hose assembly as shown in the diagram below:

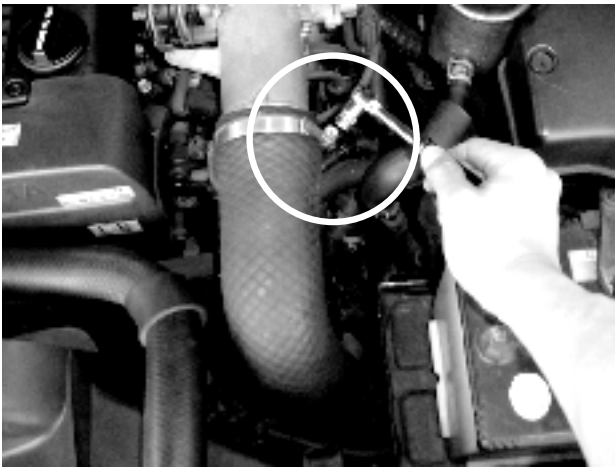


Step 14. Install the 6mm end of the Silicon hose assembly supplied onto the metal tube and secure with the 6mm spring clamp supplied.



SOARER TT BLOW-OFF VALVE ADAPTOR INSTRUCTIONS

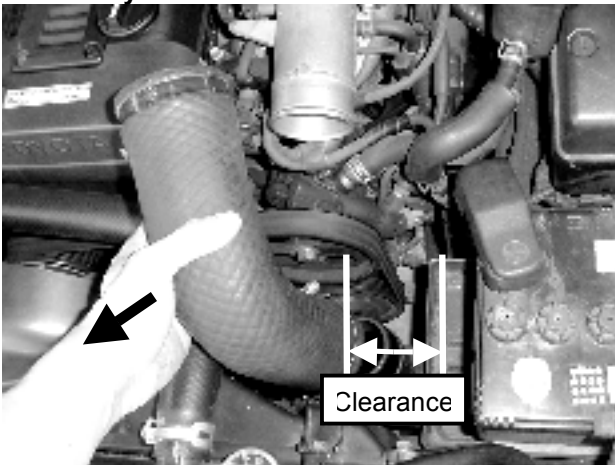
Step 15. Undo the hose clamp on the top of the factory intercooler pipe, using a 10mm socket.



Step 16. Undo the hose clamp on the bottom of the factory intercooler pipe, using a 10mm socket.



Step 17. Remove the factory intercooler pipe. **Important!** You may need to increase the clearance between the Soarer TT adaptor and car battery to accommodate for the BOV. To increase the clearance you may have to adjust or replace the car battery with a smaller unit.



Step 18. Fit the Silicon hose couplers over the Soarer Adaptor. Note that the hose couplers are of different diameters to suit the larger and smaller ends of the adaptor. Install your Turbosmart BOV onto the adaptor by following the instructions included with the BOV.



Step 19. Fit the adaptor between the intercooler and the throttle body. Using two of the 90mm hose clamps supplied, secure the Silicon hose coupler onto the Soarer adaptor and the throttle body.



Step 20. Using two of the 70mm hose clamps supplied, secure the Silicon hose coupler onto the Soarer Adaptor and the intercooler pipe.



SOARER TT BLOW-OFF VALVE ADAPTOR INSTRUCTIONS

Step 21. Connect the 5mm end of the Silicon hose assembly onto the BOV and secure it with the 5mm hose spring clamp supplied.



TROUBLE SHOOTING

The following points should be checked if you find that your engine is dipping below normal idle, stalling or if the BOV is functioning poorly. Please note the following checks will cure 99% of problems experienced with fitting your BOV.

- Check that the O-ring on the base of the BOV is fitted correctly and is in good condition.
- Ensure that the BOV grub screws and lock-nuts are tightened on the adaptor.
- Ensure all hose couplers are fitted properly over the Soarer Adaptor and the throttle body/intercooler.
- Ensure all 90mm hose clamps are tightened over the two Silicon hose couplers.
- Ensure the Soarer BOV blank is installed with factory O-ring fitted and secured by the factory nut.
- Ensure the plumb-back hose is blanked off with the blanking plug and secured with the 40mm hose clamp supplied.
- Ensure spring clamps are secured on silicon hoses and fittings.
- Re-adjust the setting of your BOV. Please refer to your BOV fitting instructions for further information.

Warranty

Turbosmart warrants its products to be free from faults or defects for the life of the product. *

* Subject to Turbosmart trading terms and conditions

Warning!

Incorrect use of this product may result in damage to your vehicle. Failure to observe any notes or recommendations may result in incorrect use of this product. This product is intended for use in off-road racing only. Turbosmart will accept no responsibility for the incorrect use of this product.

Disclaimer!

Turbosmart will not be held responsible for any damage caused to property or person, directly or indirectly related to the use of any Turbosmart products.



PART
NUMBER

SOARER TT BLOW-OFF VALVE ADAPTOR INSTRUCTIONS

THE TURBOSMART PLEDGE

DO NOT USE ANY TURBOSMART PRODUCT UNTIL YOU HAVE CAREFULLY READ AND UNDERSTOOD THE FOLLOWING AGREEMENT.

Please call if you have any questions or do not understand this agreement. Refer to our brochure, website or catalogue for terms and conditions and further information regarding your product. Turbosmart appreciates your business and pride ourselves on our customer service. We are always happy to offer you advice and will provide you with help in any way we can. The purpose of this agreement is to avoid any problems or hard feelings.

We sometimes make mistakes, as do our dealers, distributors and suppliers. Even customers can sometimes order the wrong parts. Do not use, modify, install, trial assemble, nick, drop, scratch or adjust any part until you first check for any damage. Damage must be reported immediately. NO EXCEPTIONS. If there are any components missing please contact your authorised reseller immediately upon receipt of your shipment. Missing components must be reported within five (5) business days of receipt. Parts returned for any reason MUST BE IN RESALABLE CONDITION. It is YOUR responsibility, "THE CUSTOMER" to carefully package any returns to avoid shipping damage. Insurance is highly recommended. Credit cannot be issued for damaged goods.

Turbosmart Pty Ltd warrants the quality of the products it designs and manufactures to be free of defects in material and workmanship. This limited warranty is extended only to the original purchaser and may not be transferred or assigned. This limited warranty applies to any product, which after careful inspection by Turbosmart Pty Ltd, after receipt of the product from our authorised reseller, is found to have a defect in either material or workmanship. Any modifications to the product will void any and all warranties and will not be exchanged. Before installation, check new car warranty. Turbosmart Pty Ltd is not responsible for voiding any original manufactures warranty.

All warranty claims must be returned to the authorised reseller, you must return the product and sales receipt, at your own expense, accompanied by a letter stating the reason for the claim. Proof of purchase must be provided with any warranty claim and will be verified with the authorised reseller from which the product was purchased.

If all the above procedures are followed, and the product is found to be defective in either workmanship or material, Turbosmart Pty Ltd shall either repair or replace the product, at its sole discretion, and sole cost. This limited warranty does not cover or apply to any personal injury, labour charges or any other incidental costs or damages caused by the defective product. The individual purchaser acknowledges and agrees that the disclaimer of any liability for personal injury is a material term for this agreement and the individual purchaser agrees to indemnify Turbosmart Pty Ltd and to hold Turbosmart Pty Ltd harmless for any claim related to the item of the equipment purchased. Under no circumstances will Turbosmart Pty Ltd be liable for any damages or expenses by reason of use or sale of any such equipment.

THIS LIMITED WARRANTY IS THE ONLY EXPRESS WARRANTY, WHICH APPLIES TO TURBOSMART PTY LTD PRODUCT AS EXPRESSLY GIVEN IN LIEU OF ANY OTHER WARRANTY EXPRESSED OR IMPLIED, INCLUDING THAT OF MERCHANTABILITY. ANY IMPLIED WARRANTY INCLUDING THAT OF MERCHANTABILITY AND/OR FITNESS FOR A PARTICULAR PURPOSE IS HEREBY LIMITED BY THE SAME TERMS AND TIME LIMITATIONS SET FORTH IN THIS LIMITED EXPRESS WARRANTY AND OTHERWISE EXCLUDED.

EXCEPT FOR THOSE OBLIGATIONS ASSUMED HEREIN, TURBOSMART PTY LTD ASSUMES NO OTHER OBLIGATIONS IN CONNECTION WITH THE SALE OF ITS PRODUCTS.

IN THE EVENT THAT THE INDIVIDUAL PURCHASER DOES NOT AGREE WITH THIS AGREEMENT THE BUYER MAY PROMPTLY RETURN THIS PRODUCT, IN A NEW AND UN-USED CONDITION, WITH A DATED PROOF OF PURCHASE, TO THE PLACE OF PURCHASE WITHIN SIXTY (60) DAYS FROM THE DATE OF PURCHASE FOR A FULL REFUND.

THE INSTALLATION OF THIS PRODUCT INDICATES THAT THE INDIVIDUAL PURCHASER HAS READ AND UNDERSTOOD THIS AGREEMENT AND ACCEPTS ITS TERMS AND CONDITIONS.

Happy motoring!

The Turbosmart Team.