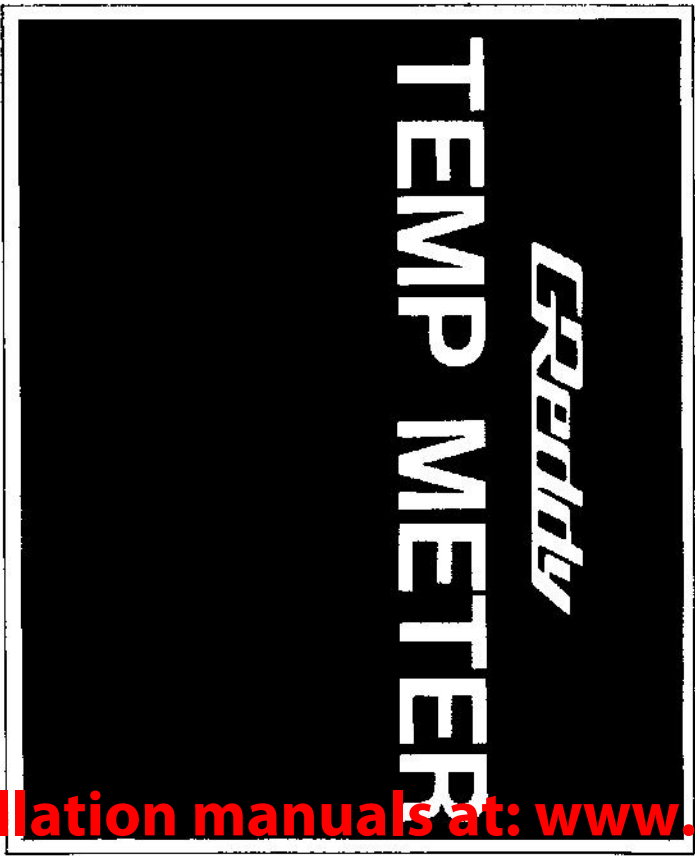


You can purchase this part at: <http://thmotorsports.com>

TRUST SUPER TUNING SYSTEM AIMING AT REAL COMPETITORS.

# 608 WARNING METER



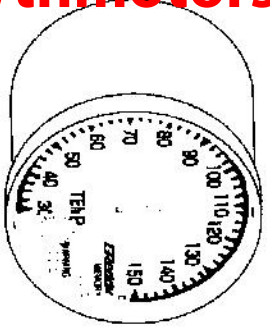
Instruction Manual

TRUST CO., LTD.

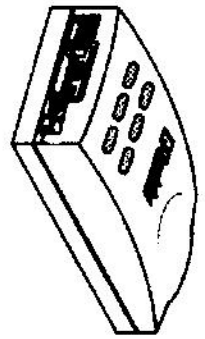
MADE IN JAPAN.

More installation manuals at: [www.thmotorsports.net](http://www.thmotorsports.net)

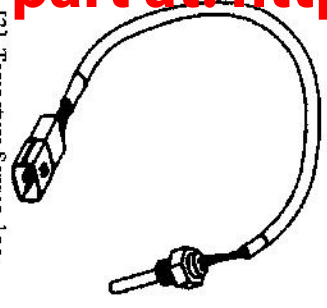
Parts List:



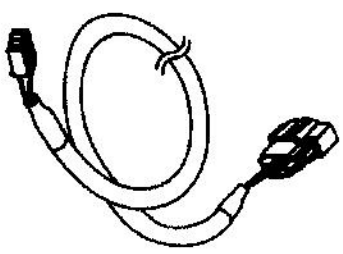
[1] Temperature Meter 1pc.



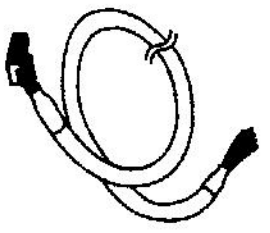
[2] Data Link Unit 1pc.



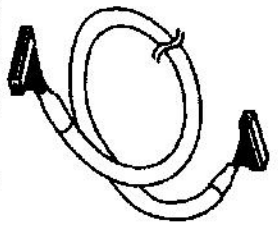
[3] Temperature Sensor 1pc.



[4] Sensor Harness 3m 1pc.

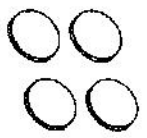


[5] Electrical Harness 0.5m 1pc.

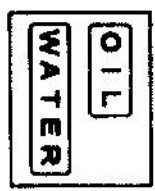


[6] Meter Harness 2m 1pc.

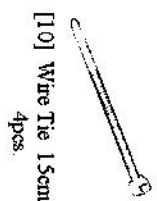
Parts List:



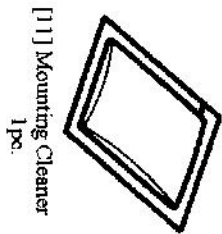
[7] Double-sided Tape 1pc.



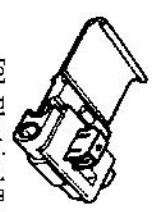
[8] Meter Label Set 1pc.



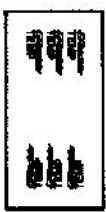
[10] Wire Tie 15cm 4pcs.



[11] Mounting Cleaner 1pc.



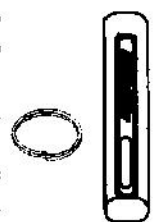
[9] Electrical Tap 4pcs.



[12] Harness Label Set 1pc.



[13] Instruction Manual 1pc.



[14] Warning Adjusting Socket 1pc.

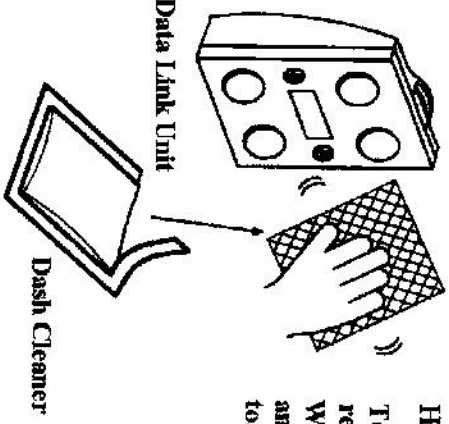
# Installation:

## Data Link Unit Mounting

When using the provided double-sided tape to mount the data link unit, clean the mounting surfaces with the provided dash cleaner

### ⚠ Caution

- ⚠ Do not use the dash cleaner on any other products.
- ⚠ If there is dirt, dust, or oil on the mounting surface, the double-sided tape may not adhere to the dash.



How to use:  
 Tear the silver package open and remove the dash-cleaner. Wipe the back of the data link unit and the dash surface, to be mounted to.

# Installation:

## Meter Mounting

### ⓘ Important

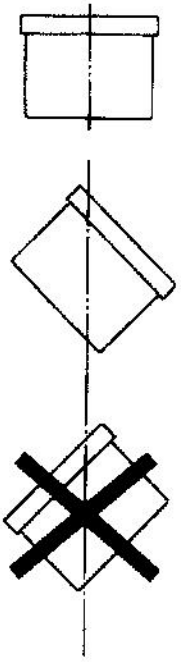
- ⓘ When looking for a location to mount the meter, be sure not to have the meter interfere with the driver's view of the road or other important instruments.

### Note

Mounting brackets for these warning meters are available for simple installation.  
 (GReddy Meter Band 369601 or GReddy Meter Holder 369602)

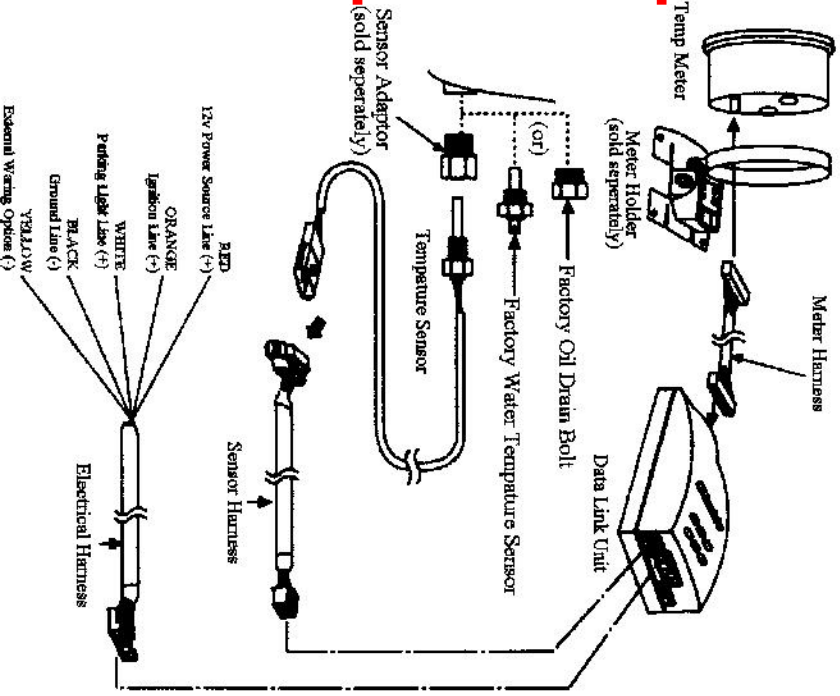
### ⚠ Caution

- ⚠ Never mount the meter facing downward. Always mount the meter horizontally or facing upward. Mounting the meter facing downward can cause the meter to malfunction.



# Installation:

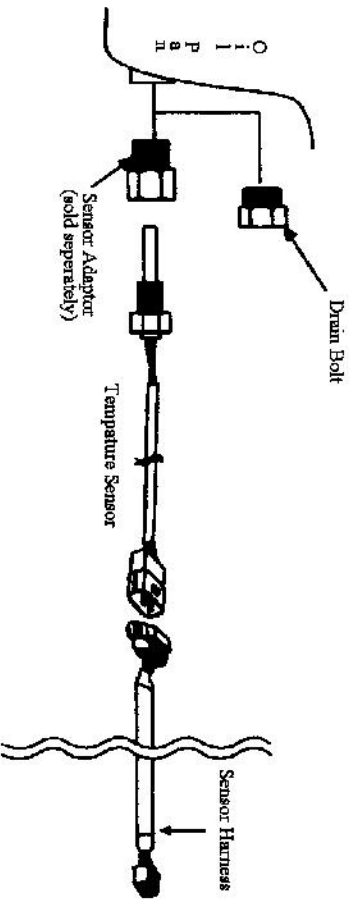
Wiring Diagram



# Installation:

Option #1 Oil Temp Meter

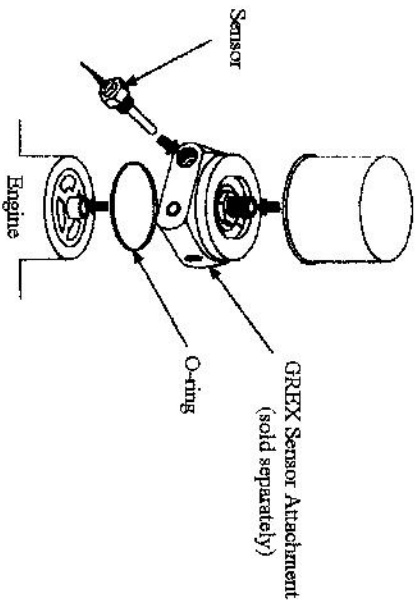
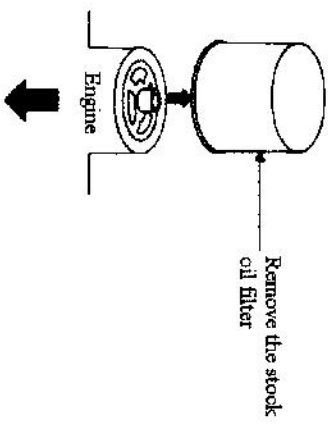
- CAUTION**
- ⚠ Avoid mounting the sensor harness near any ignition systems.
  - ⚠ Make sure you catch the oil with a pan when removing the oil drain bolt.
  - ⚠ Make sure the engine is not hot when removing the drain bolt.
  - ⚠ Make sure to refill the engine oil after installation of the sensor.



# Installation:

Option # 2 Oil Temp Meter

## Sensor Installation (Using GREX sensor attachment unit) Sold Separately



### Important

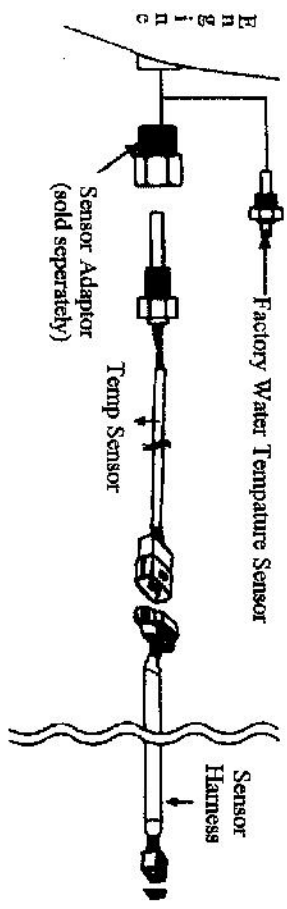
If you are using the GREX Oil Cooler Kit, the temperature sensor can be directly installed to the oil block of the oil cooler kit.

# Installation:

Option # 3 Water Temp Meter

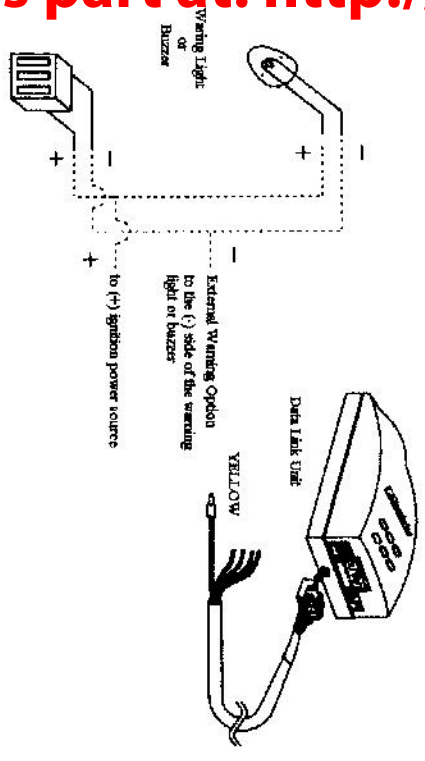
## CAUTION

- ⚠ Make sure to catch the coolant with a pan, when removing the factory water temperature sensor.
- ⚠ Do not install when the engine is hot. Cool down the engine and remove the radiator cap before installation.
- ⚠ Make sure to use teflon tape on the sensor threads to achieve a proper seal.
- ⚠ Check and restore the water-coolant level after installation.



## Installation:

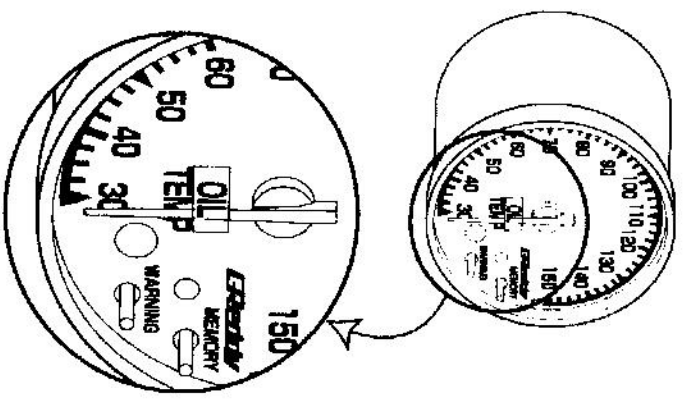
External Warning Option Output



## Installation:

How to use the meter decal

Since this meter can be used either as a water or oil temperature meter, inclosed is a sheet of meter labels to specify the appropriate fluid temperature.



Apply the label as shown in the picture, onto the outside of the meter. (left)

When using the meter as an oil temp meter use the "oil" decal, when using the meter as an water temp meter use the "water" decal.

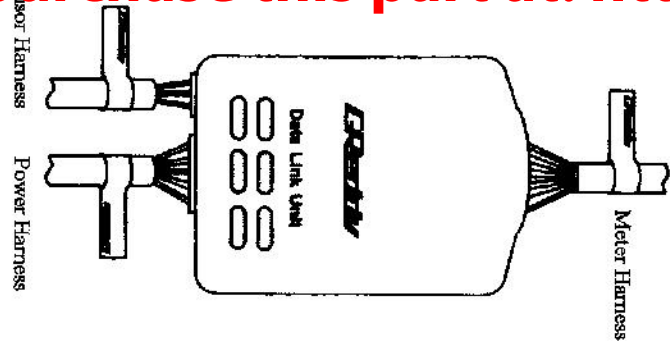


## Suggestions:

How to use the Harness Labels

If you are installing more than one warning meter, it is suggested to use the provided decal set to label each of the harness for each individual meter type.

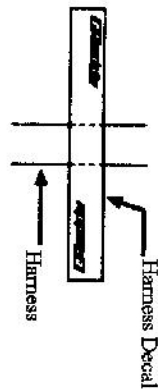
The decal set includes three labels: 1) Meter harness 2) Sensor Harness 3) Power Harness. Install as shown below.



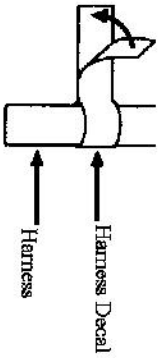
How to apply:

Peel label off from the decal sheet

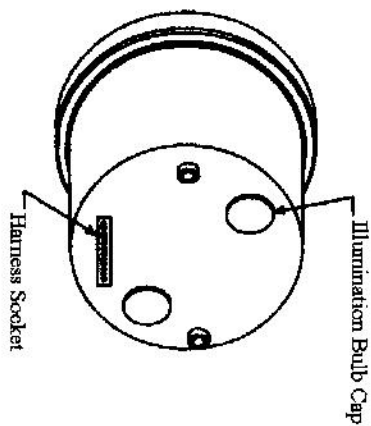
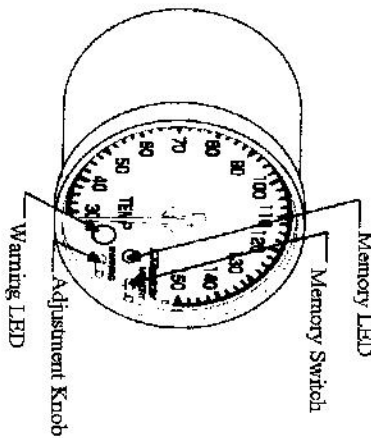
Apply as shown below



Fold the label onto the harness as shown below.



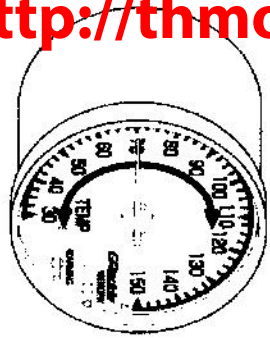
## Operation:



- **Memory Switch**
  - Used to switch to "Peak" mode
  - Used to reset the memory
- **Memory L.E.D.**
  - Illuminates
  - Flashes when resetting the memory
- **Adjustment Knob**
  - Used to adjust the warning point (set)ur
- **Warning L.E.D.**
  - Illuminates when in the warning mode
  - Flashes when the harness is disconnected or when there is a "short" in the electrical system

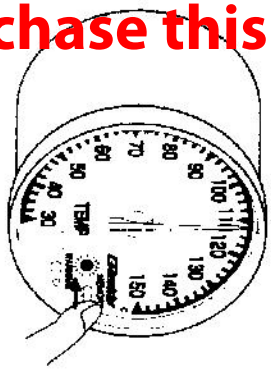
# Operation:

## Real-time Meter Mode:



Displays the water or oil temperature reading.

## Peak Water or Oil Temp Mode



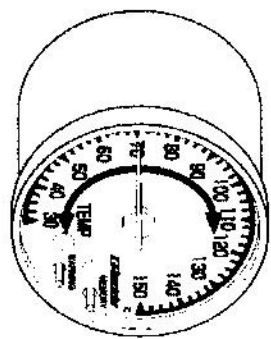
Press memory switch momentarily to get into "peak mode"

When "peak mode" is turned on, the memory LED will illuminate and the meter will display the peak temperature achieved.

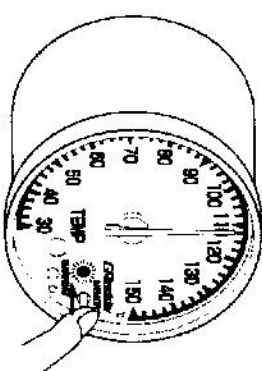
Press the memory switch again, to return to "real-time mode"

# Operation:

## Resetting the Memory



Real-time Meter Mode

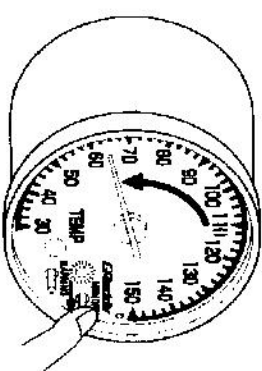


Peak Mode



Press the memory switch for over 2 sec., to reset the memory

Memory can be reset in both "Real-time Meter Mode" or "Peak Mode"

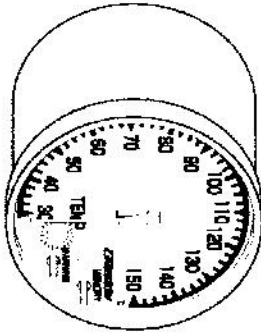




# Operation:

Check Mode

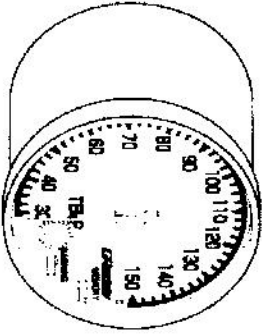
## Bad Harness Connection Check Feature



When there is a bad sensor or ground connection, the warning LED will flash quickly.  
(Flash, flash -- flash, flash --flash, flash)

This feature does not check the connection on the power harness.

## Short Circuit Check Feature



When there is a short circuit in the sensor or harness, the warning LED will flash slow.  
(flash -- flash -- flash)

This feature does not check for short circuits on the power harness.