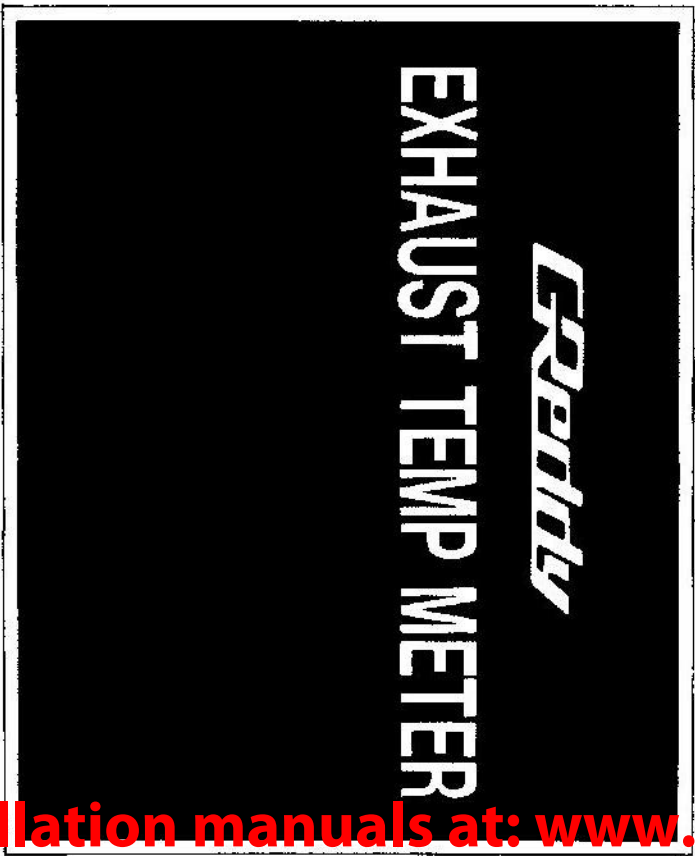


You can purchase this part at: <http://thmotorsports.com>

TRUST SUPER TUNING SYSTEM AIMING AT REAL COMPETITION

600^{cc} WARNING METER

Covers Part Numbers 16000803, 16000804
and 16000822



Instruction Manual

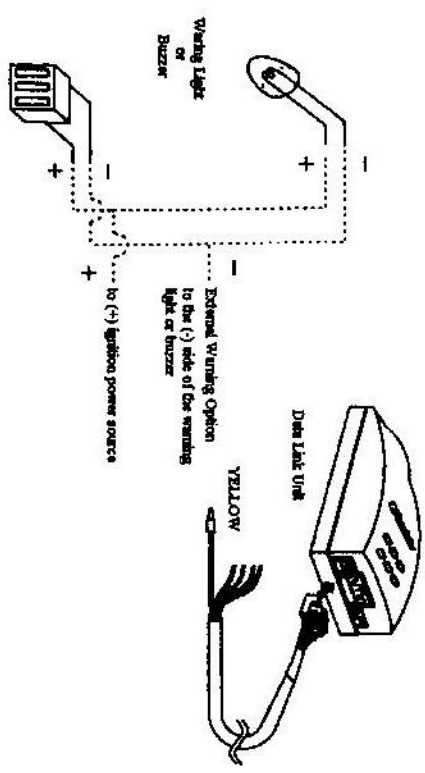
TRUST CO., LTD.

MADE IN JAPAN.

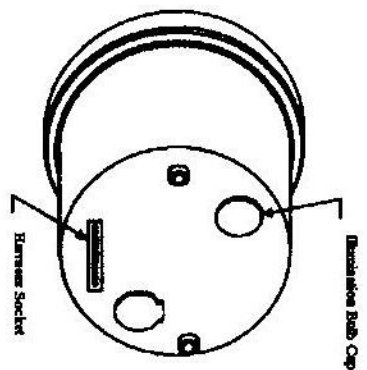
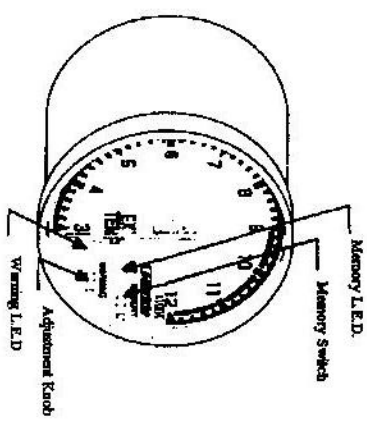
More installation manuals at: www.thmotorsports.net

Installation:

External Warning Option Output



Operation:



- **Memory Switch**
 - Used to switch to "Peak" mode
 - Used to reset the memory
- **Memory L.E.D.**
 - Illuminates
 - Flashes when resetting the memory
- **Adjustment Knob**
 - Used to adjust the warning point (setting)
- **Warning L.E.D.**
 - Illuminates when in the warning mode
 - Flashes when the harness is disconnected or when there is a "short" in the electrical system

6.

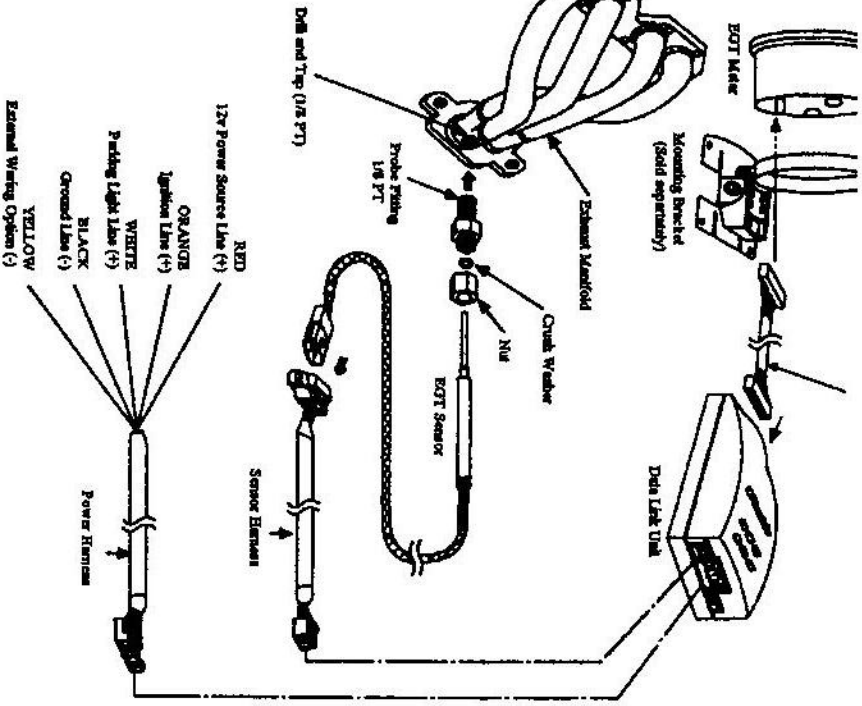
7.

Installation:

Wiring Diagram

Caution: Route the sensor harness well away from all ignition systems. Noise (ignition) from the ignition system can cause faulty readings.

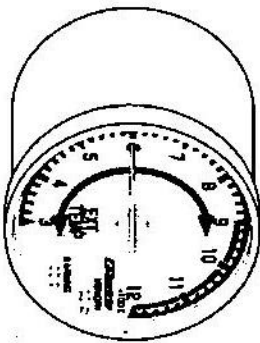
Install the EGT sensor so that 5-20mm of the probe is in the center of the exhaust pipe.



Operation:

Real-time Meter Mode:

Displays the exhaust gas temperature

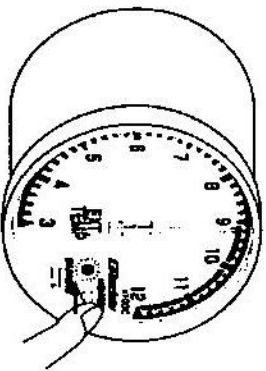


Peak Temperature Mode:

Press memory switch momentarily to get into "peak mode"

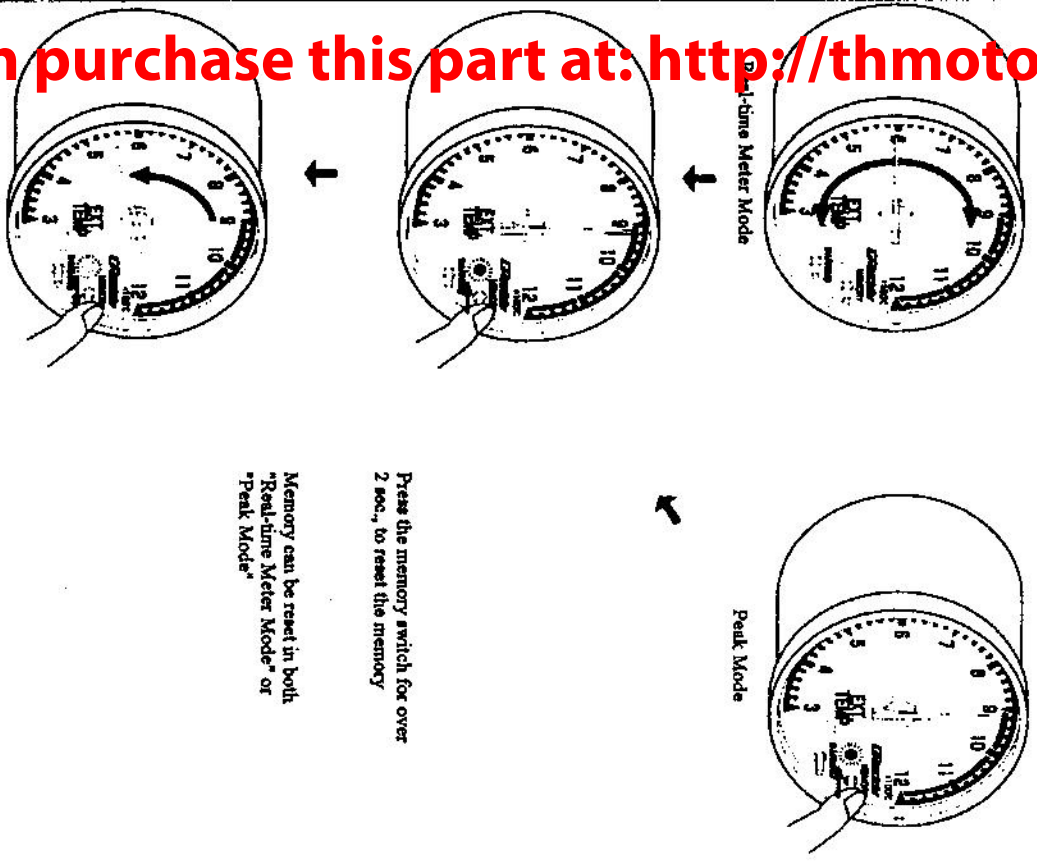
When "peak mode" is turned on, the memory LED will illuminate and the meter will display the peak temperature achieved.

Press the memory switch again, to return to "real-time mode"



Operation:

Resetting the Memory



Press the memory switch for over 2 sec., to reset the memory

Memory can be reset in both "Real-time Meter Mode" or "Peak Mode"

Installation:

Meter Mounting

Important

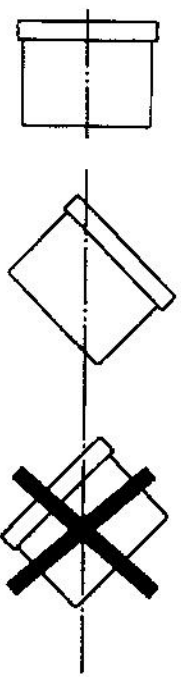
When looking for a location to mount the meter, be sure not to have the meter interfere with the driver's view of the road or other important instruments.

Note

Mounting brackets for these warning meters are available for simple installation.
(GREddy Meter Band 369601 or GREddy Meter Holder 369602)

Caution

Never mount the meter facing downward. Always mount the meter horizontally or facing upward. Mounting the meter facing downward can cause the meter to malfunction.



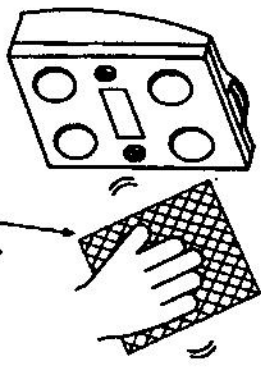
Installation:

Data Link Unit Mounting

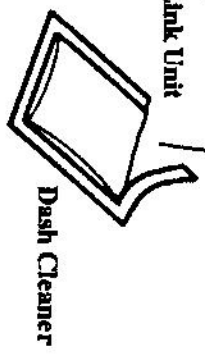
When using the provided double-sided tape to mount the data link unit, clean the mounting surfaces with the provided dash cleaner

⚠ Caution

- ⚠ Do not use the dash cleaner on any other products.
- ⚠ If there is dirt, dust, or oil on the mounting surface, the double-sided tape may not adhere to the dash.



How to use:
Tear the silver package open and remove the dash-cleaner. Wipe the back of the data link unit and the dash surface, to be mounted to.

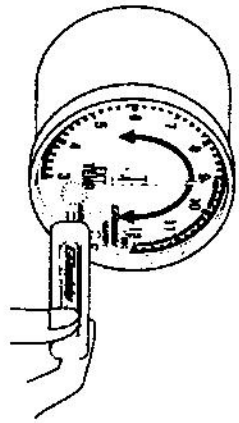


Dash Cleaner

Back of Data Link Unit

Operation:

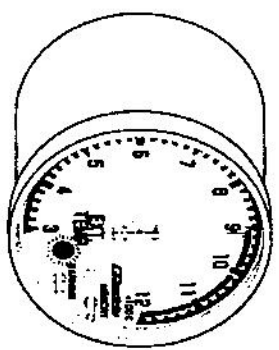
Setting the Warning Point



To set the warning point, use the provided socket tool to turn the Adjust Knob to the desired warning value. After making the adjustment, wait for 5 sec. and the meter will program the new setting and return to "Real-time Meter Mode"

Warning Mode

When the needle of the meter reaches the programmed warning point, the "Warning LED" (and optional warning light and/or buzzer) will activate. This will remain until the needle drops below the warning point.



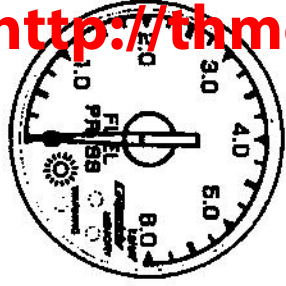
⚠ Caution

- ⚠ Do not adjust the Warning Point when Driving.
- ⚠ Always remove the adjusting socket tool after making adjustments

Operation:

Check Mode

Bad Harness Connection Check Feature



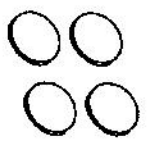
When there is a bad sensor or connection the warning LED will flash quickly.
(flash, flash -- flash, flash --flash, flash)
This feature does not check the connection on power harness.

Short Circuit Check Feature

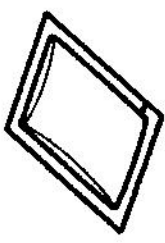


When there is a short circuit in the sensor or harness, the warning LED will flash slow.
(flash -- flash -- flash)
This feature does not check for short circuits on power harness.

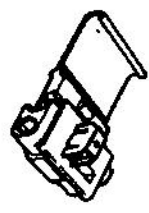
Parts List:



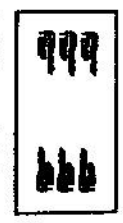
[8] Double-sided Tape
1pc.



[9] Mounting Cleaner
(for double-sided tape)
1pc.



[10] Electrical Tap
4pc.



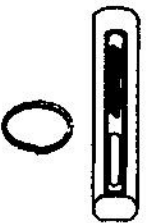
[12] Harness Labels Set
1pc.



[11] Wire Tie 15cm
4pc.

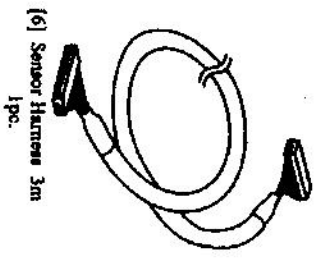
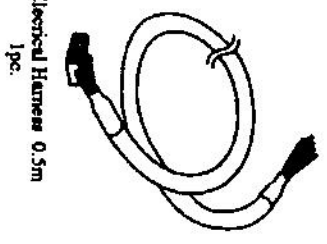
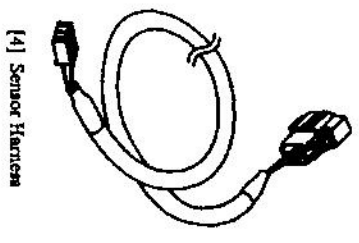
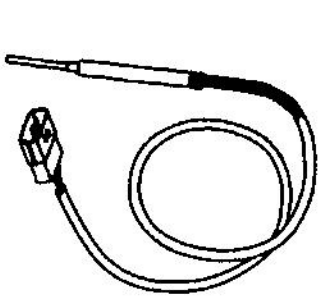
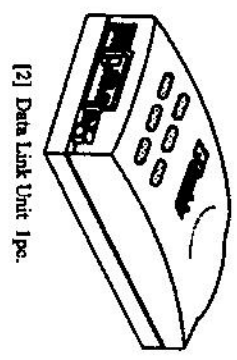
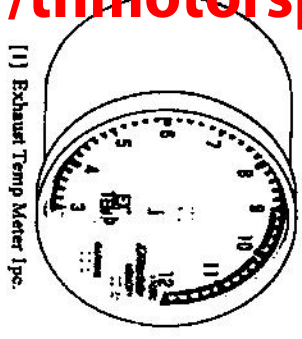


[13] Instruction Manual
1pc.



[14] Warning Adjusting Socket
1pc.

Parts List:

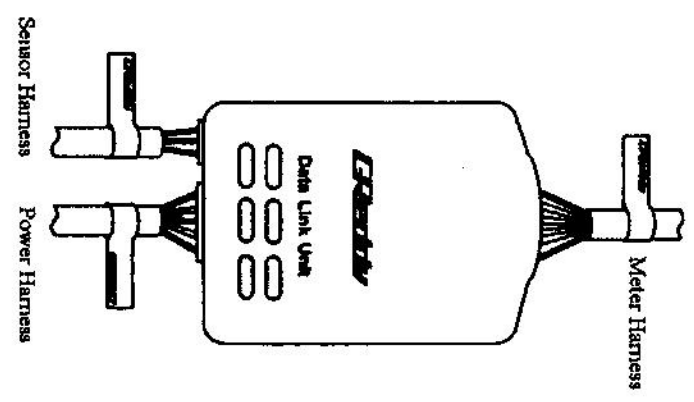


Suggestions:

How to use the Harness Labels

If you are installing more than one warning meter, it is suggested to use the provided decal set to label each of the harness for each individual meter type.

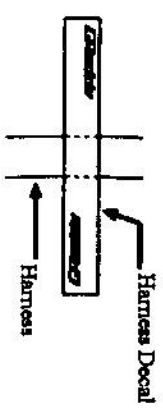
The decal set includes three labels: 1) Meter harness 2) Sensor Harness 3) Power Harness. Install as shown below.



How to apply:

Peel label off from the decal sheet

Apply as shown below



Fold the label onto the harness as shown below.

